

Japan Society for Cell Biology

Cell Structure and Function (CSF) is

the official English-language journal of the Japan Society for Cell Biology.
an international, peer-reviewed, Open Access journal.
was launched in 1975.
publishes continuously online.

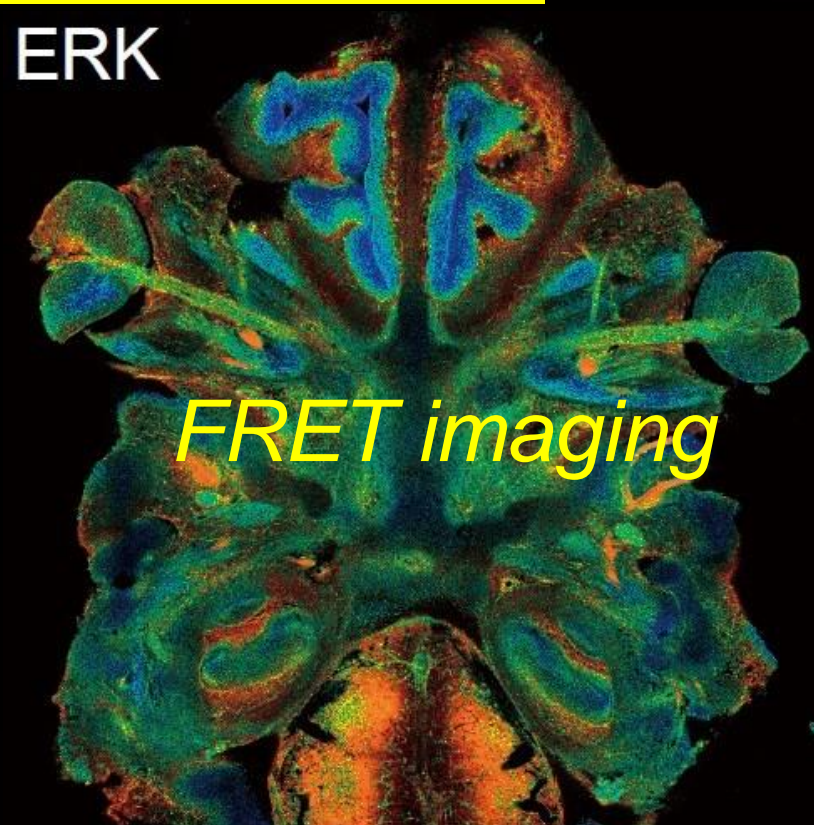
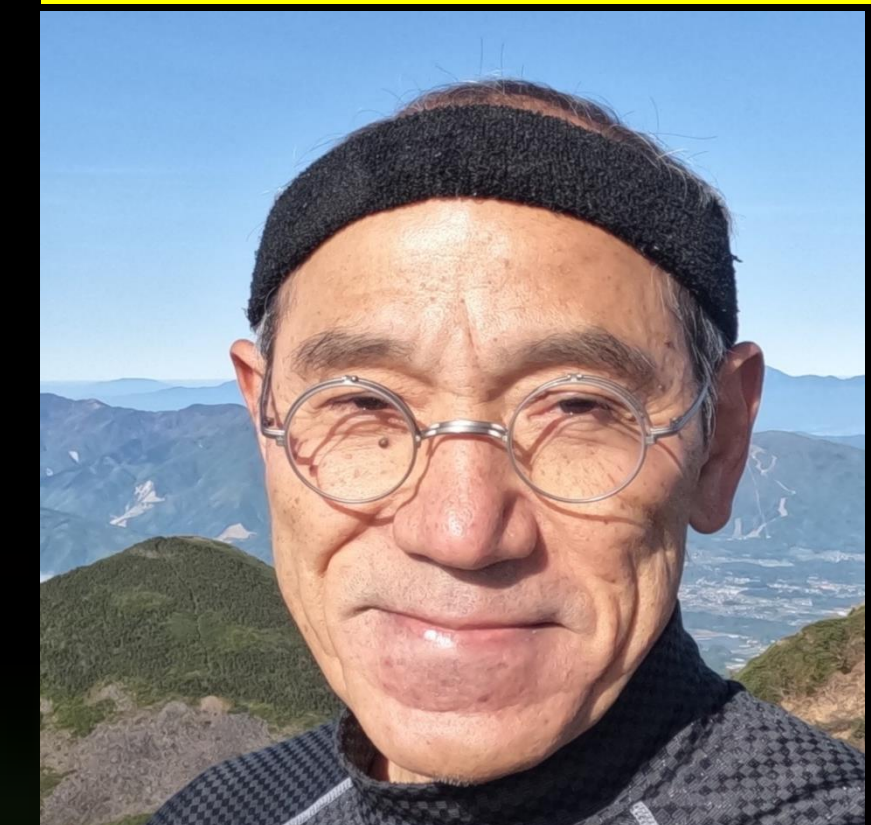
fully indexed in MEDLINE, SCIE, Scopus, DOAJ and other major databases.

CSF's articles are
freely available through J-Stage and PMC.
published under a CC BY 4.0 license.

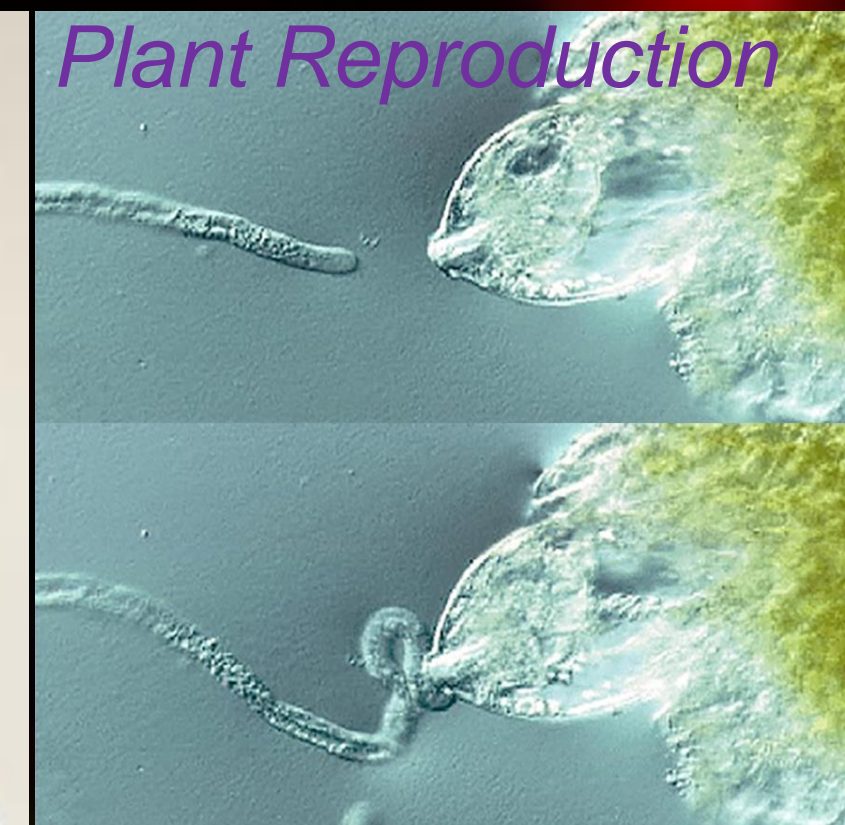
Scan me!



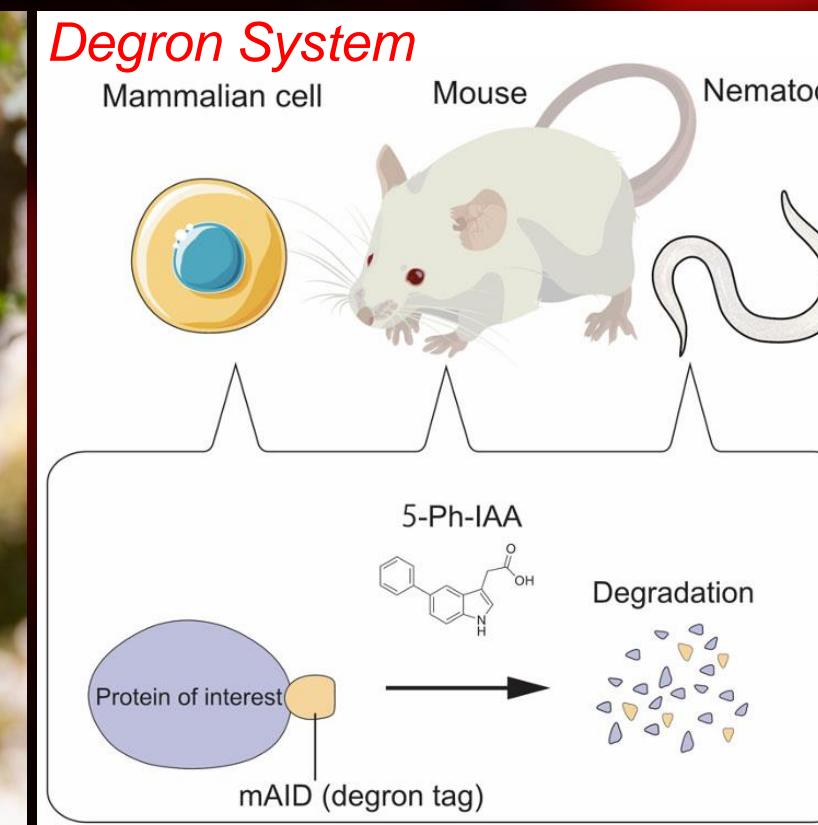
Advanced Technology



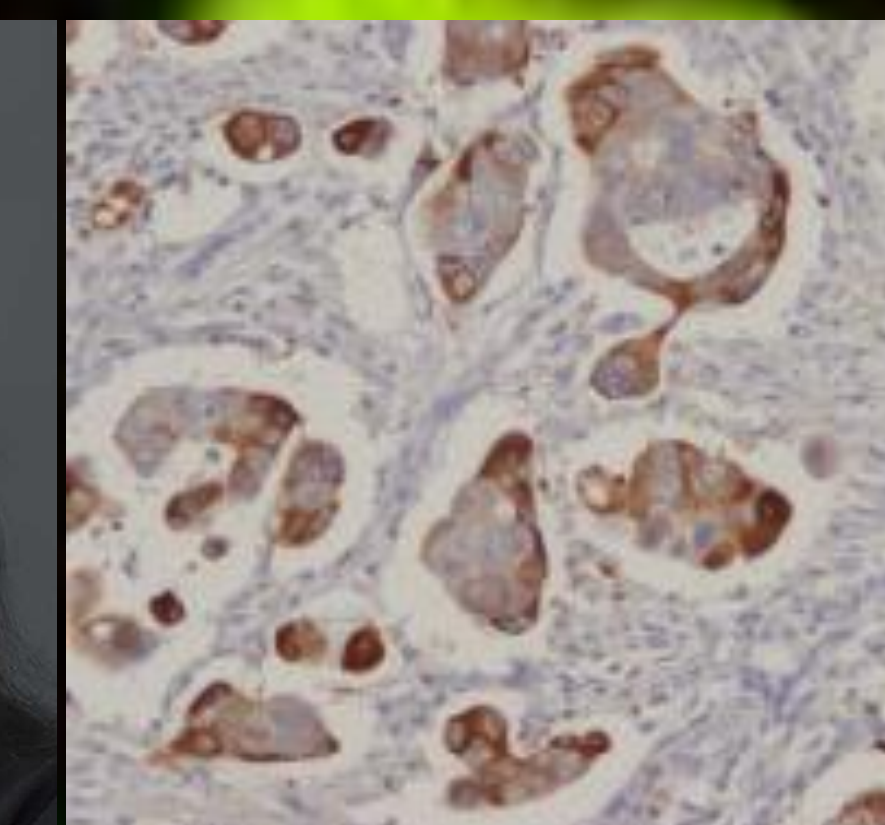
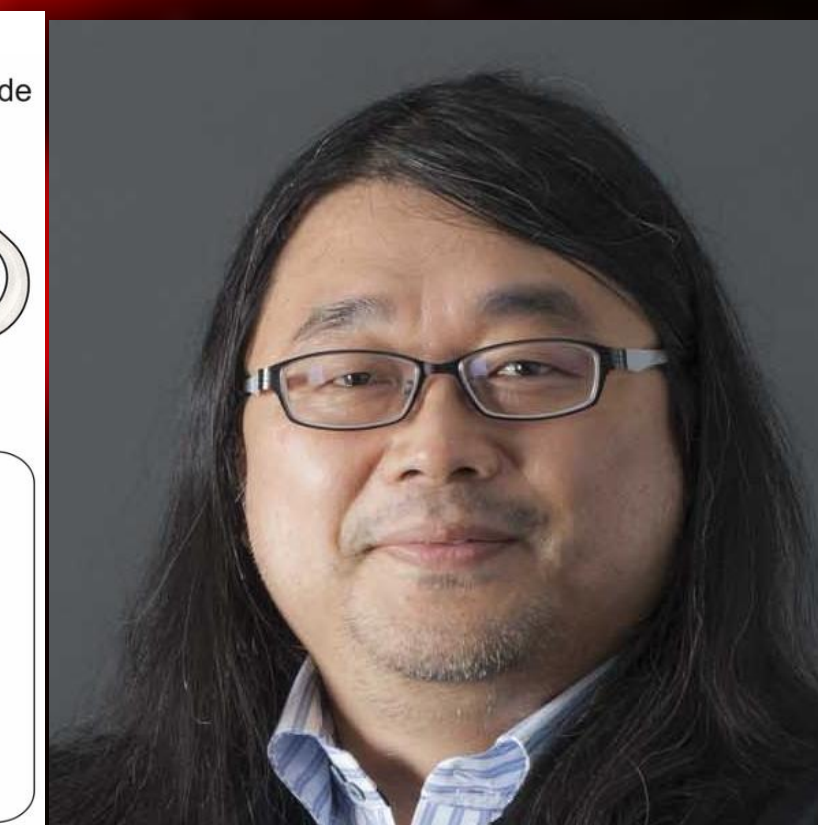
Kyoto Univ.
Michiyuki Matsuda
(Editor-in-Chief)



Univ. of Tokyo
Tetsuya Higashiyama

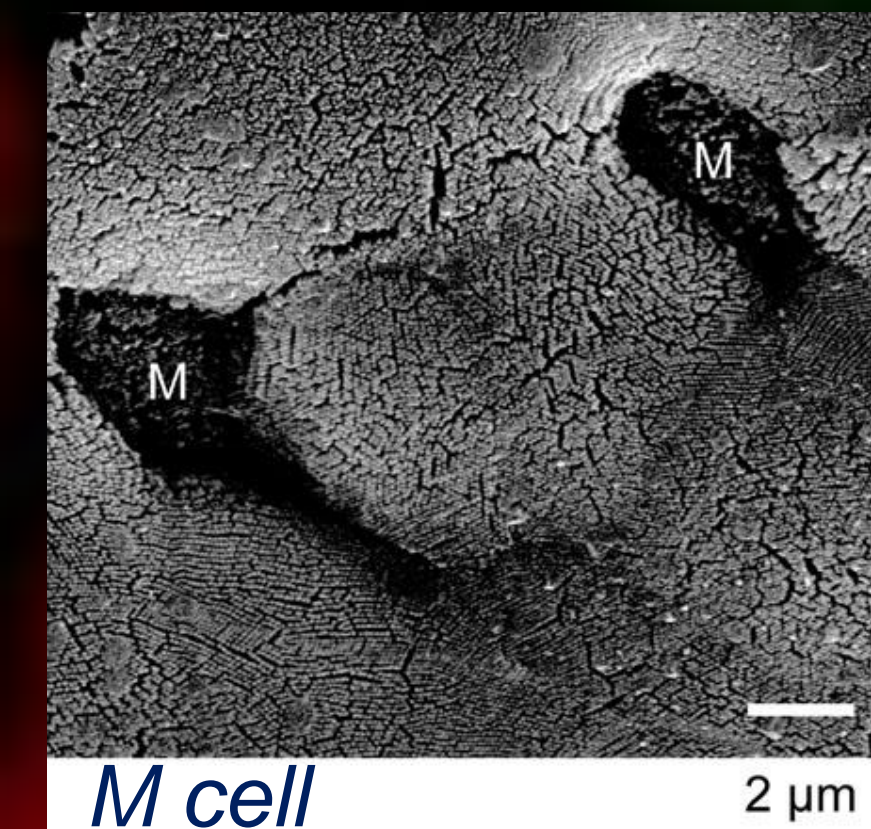


NIG
Masato Kanemaki

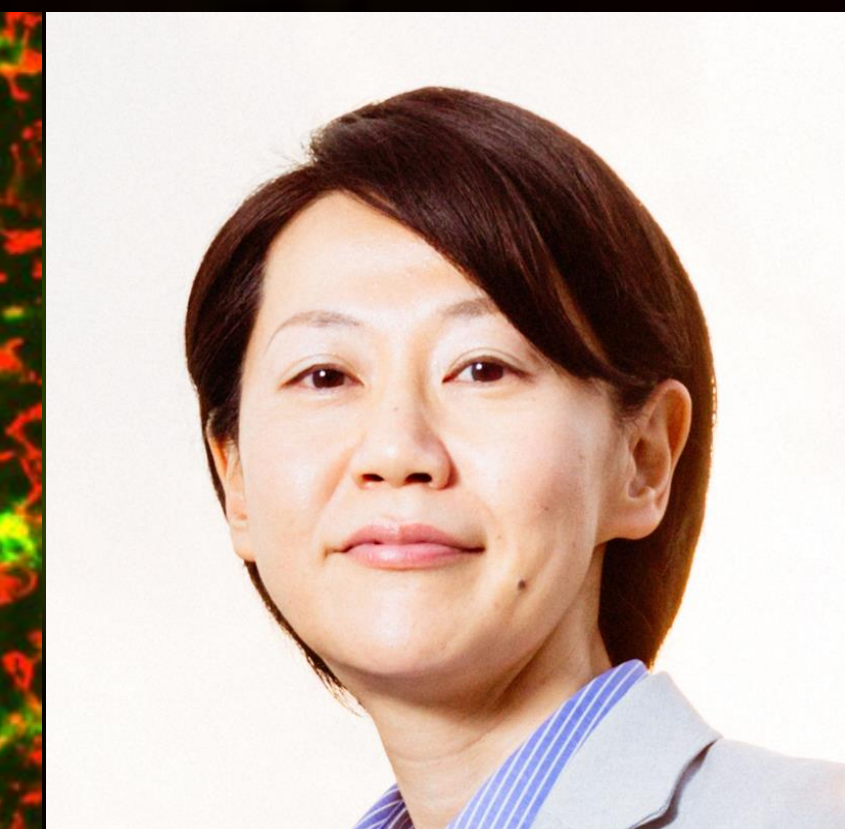
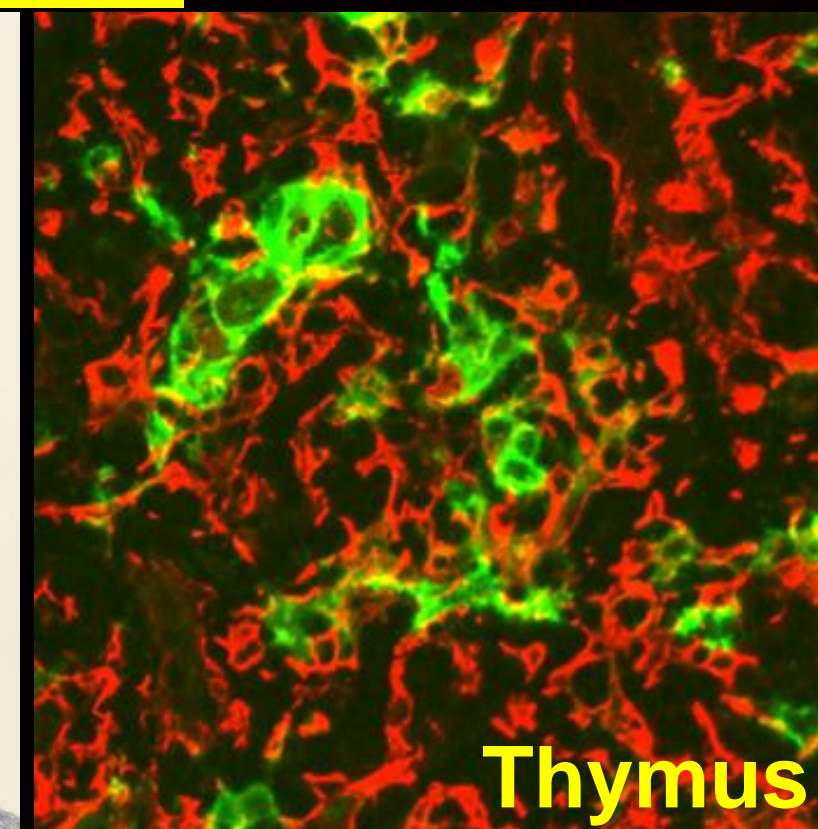


RIKEN/ Univ. of Tokyo
Yasushi Okada

Immunology



RIKEN
Hiroshi Ohno



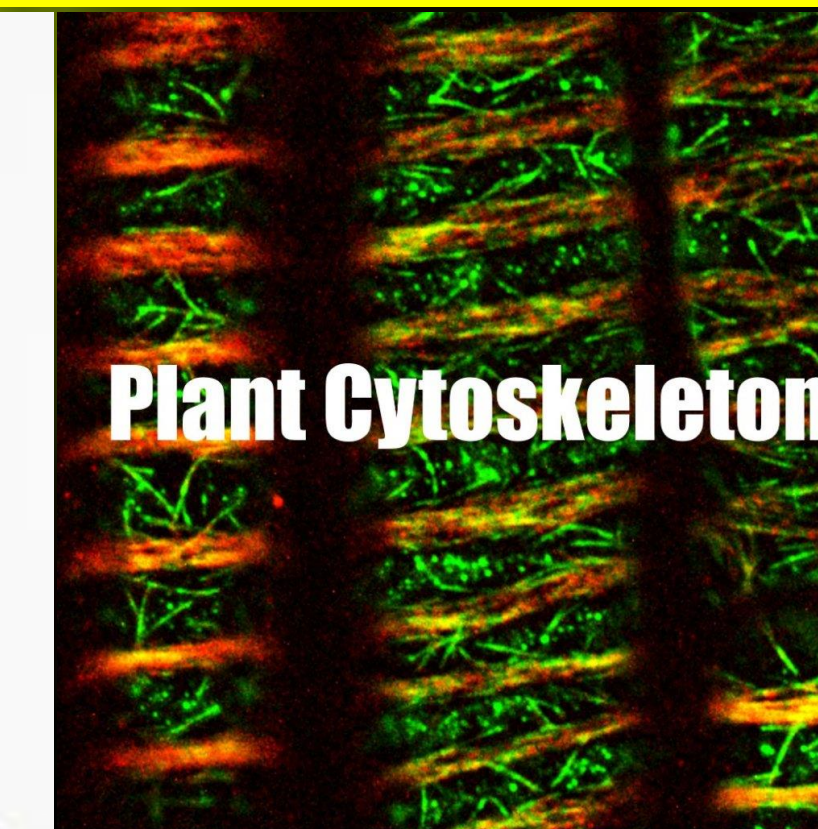
Kyoto Univ.
Yoko Hamazaki



Nagoya Univ.
Gohta Goshima



Nagoya Univ.
Yoshihisa Oda



Cytoskeleton and cell motility

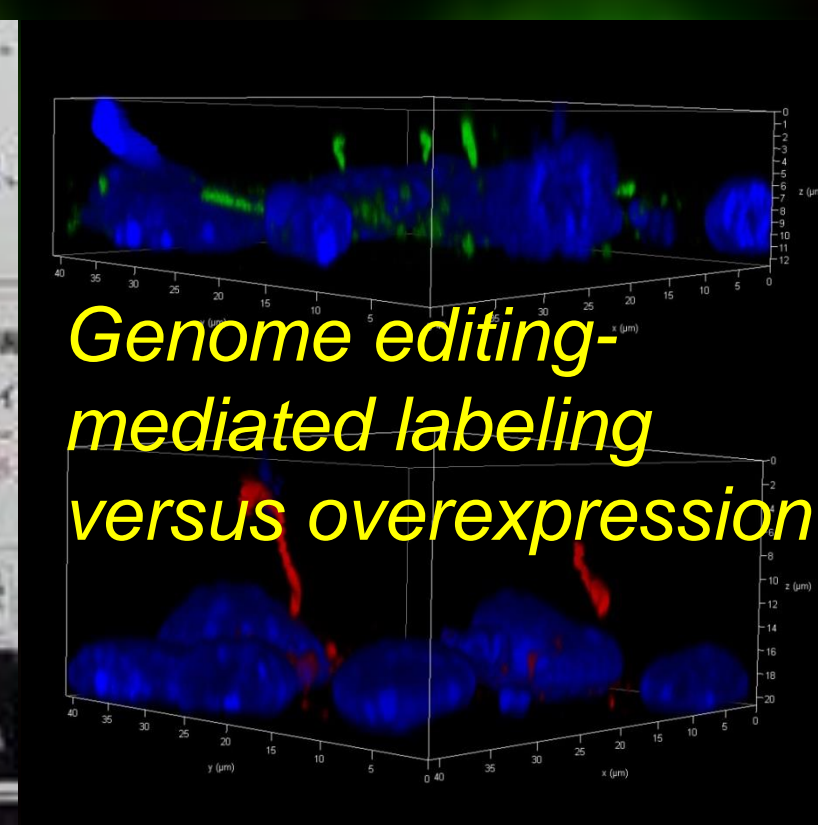
Kanazawa Med. Univ.
Etsuko Kiyokawa



RIKEN
Yuko Mimori-Kiyosue



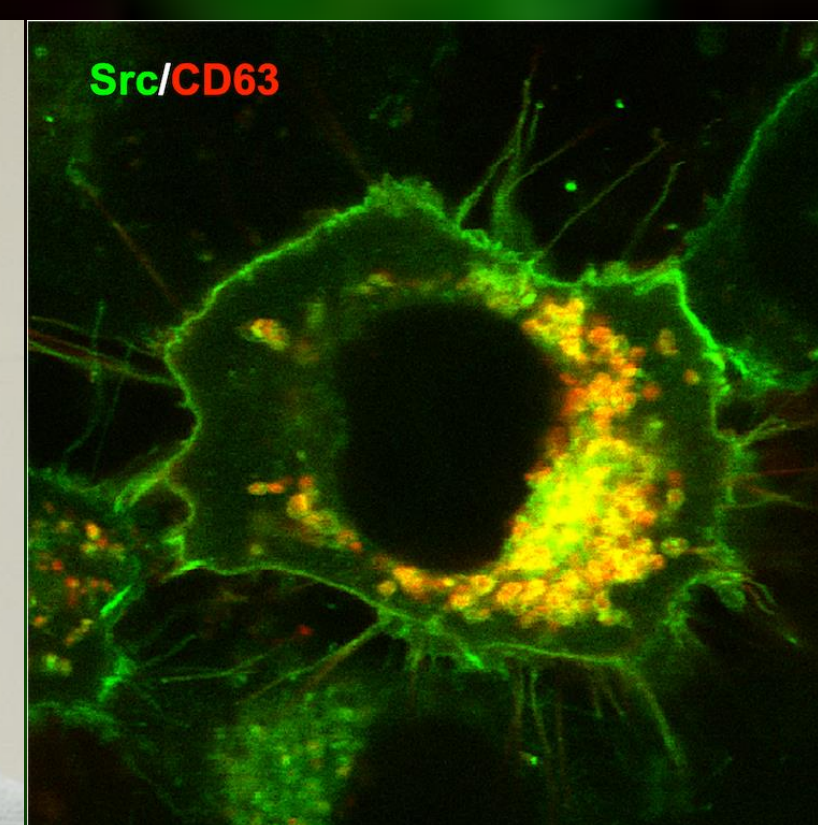
Kyoto Univ.
Naoki Watanabe



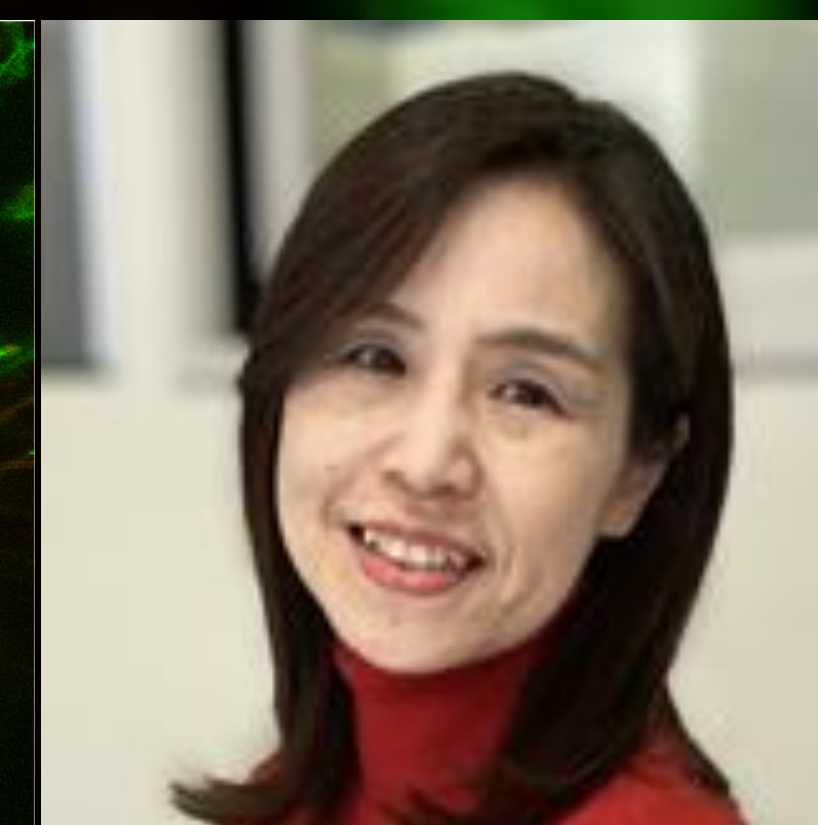
Hiroshima Univ.
Koji Ikegami



Hokkaido Univ.
Fumio Motegi

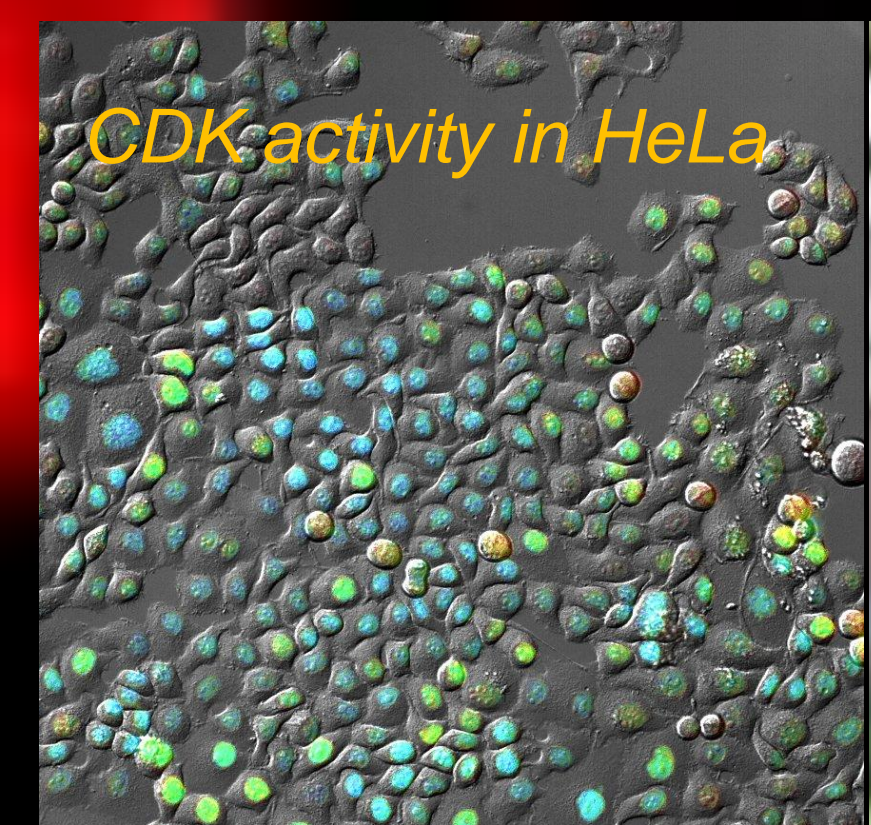


Aichi Cancer Center
Chitose Oneyama



Tokushima Univ.
Hidetaka Kosako

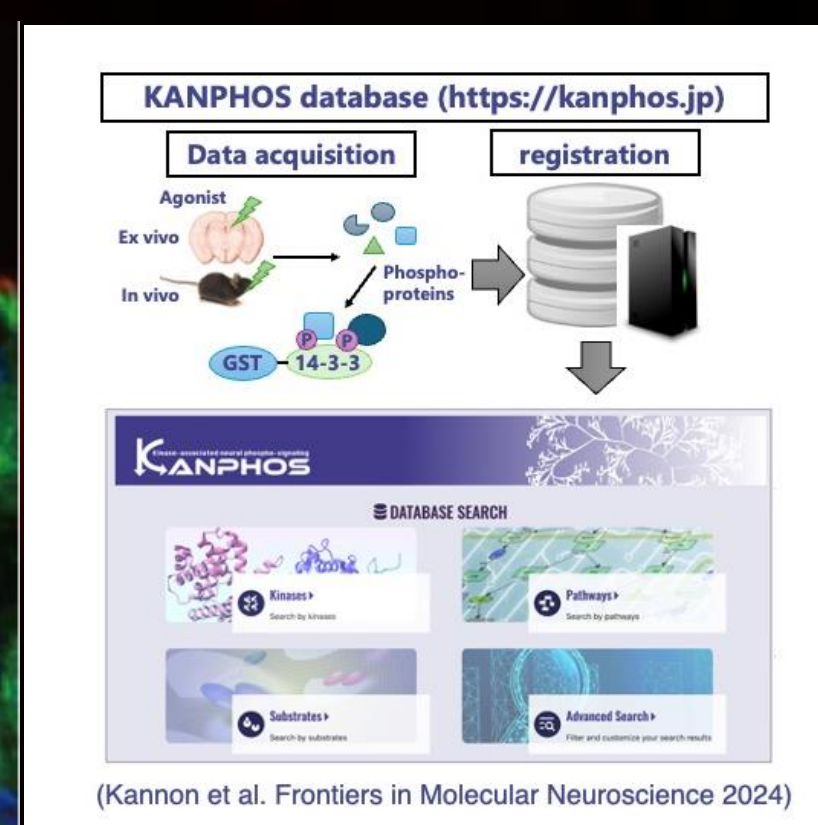
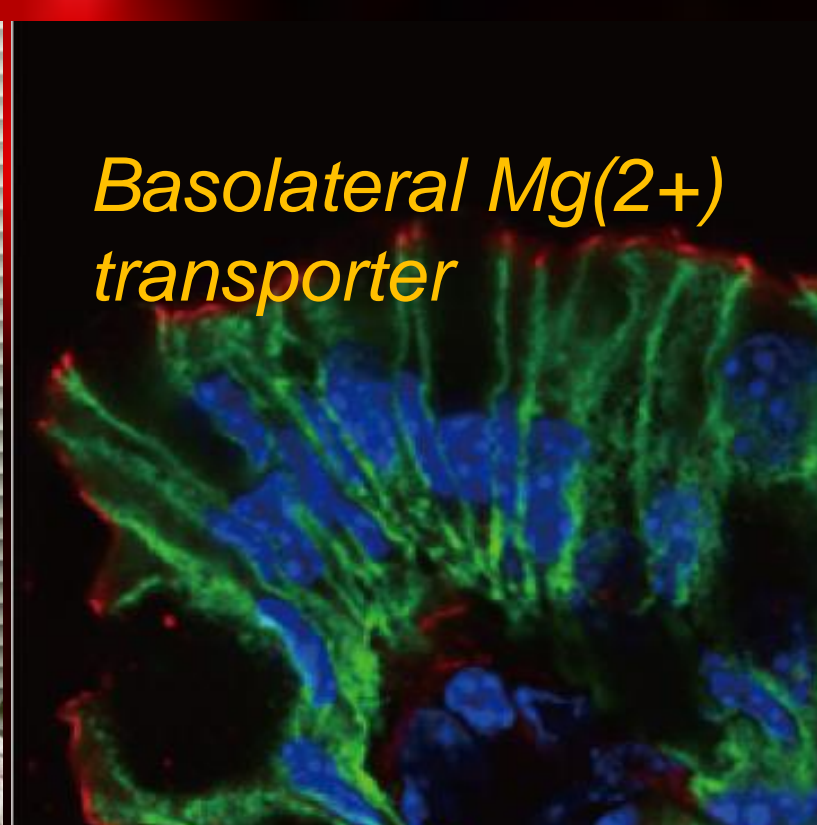
Signal transduction



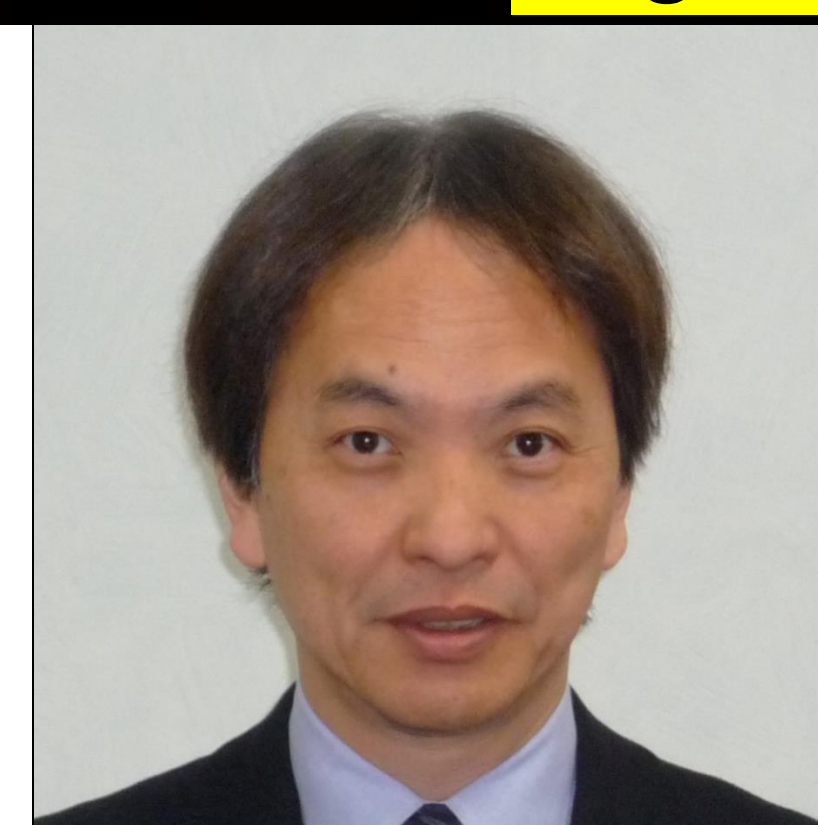
Kyoto Univ.
Kazuhiro Aoki



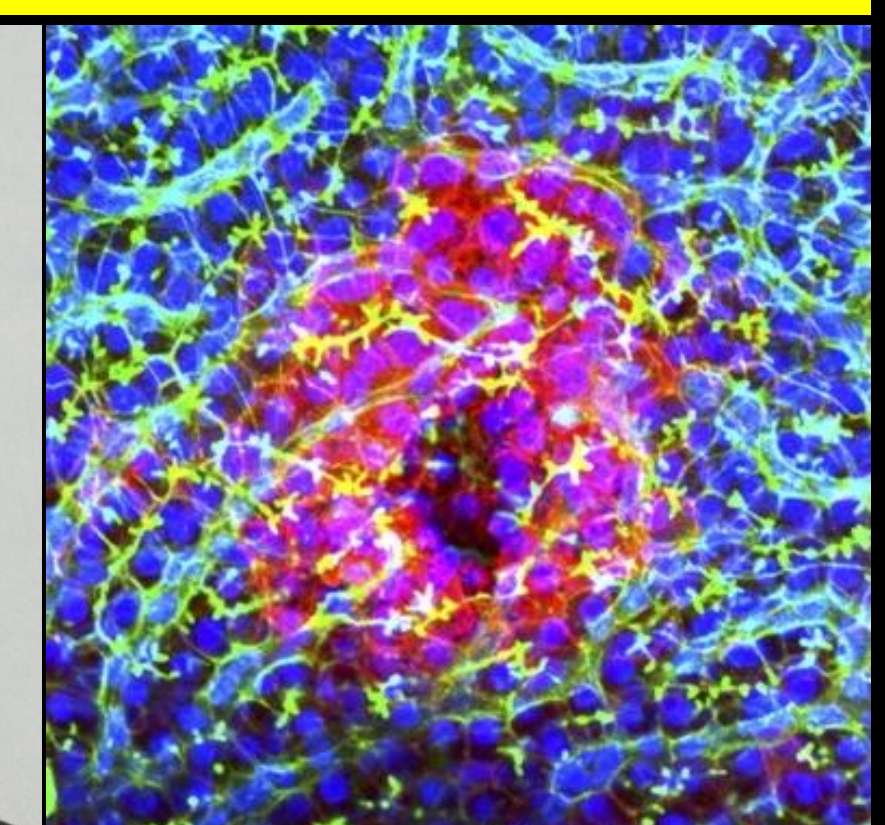
Kyoto Univ.
Hiroaki Miki



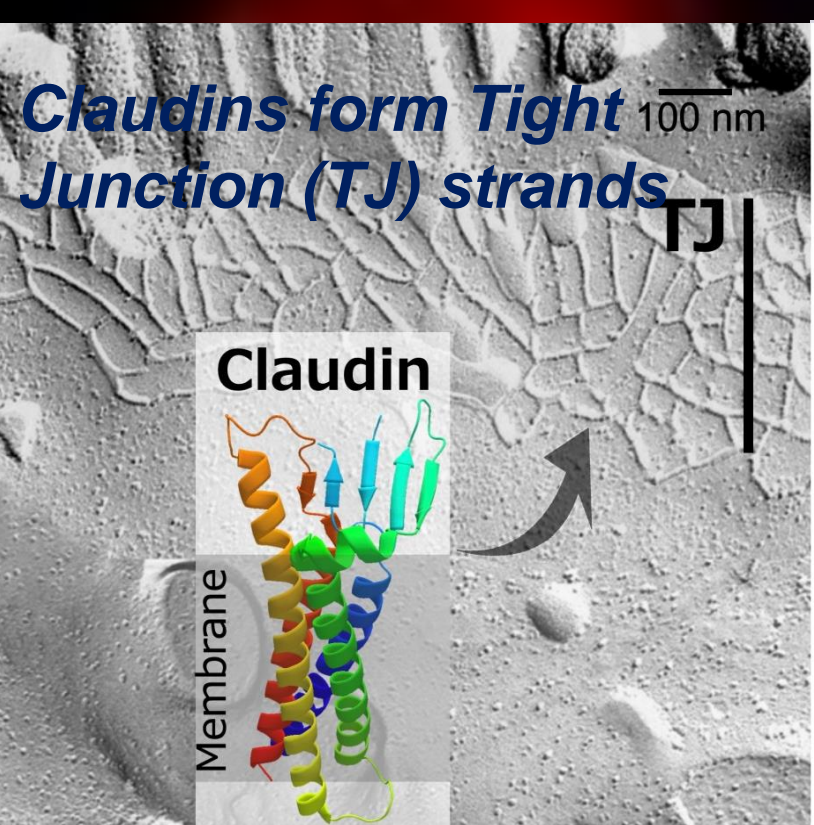
KANPHOS



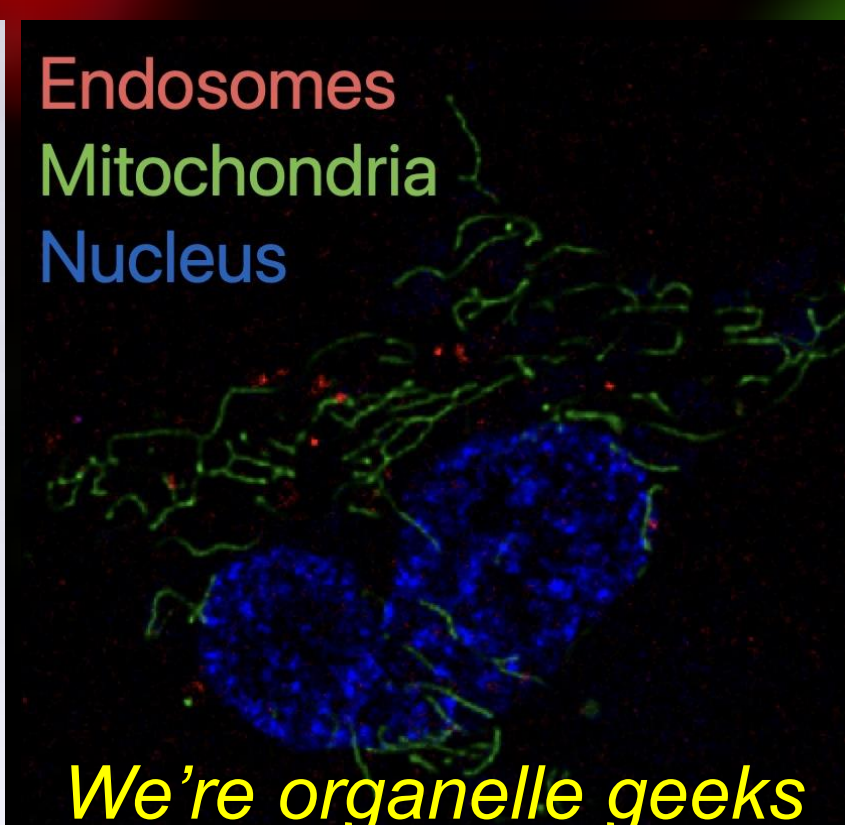
Fujita Med. Univ.
Kozo Kaibuchi



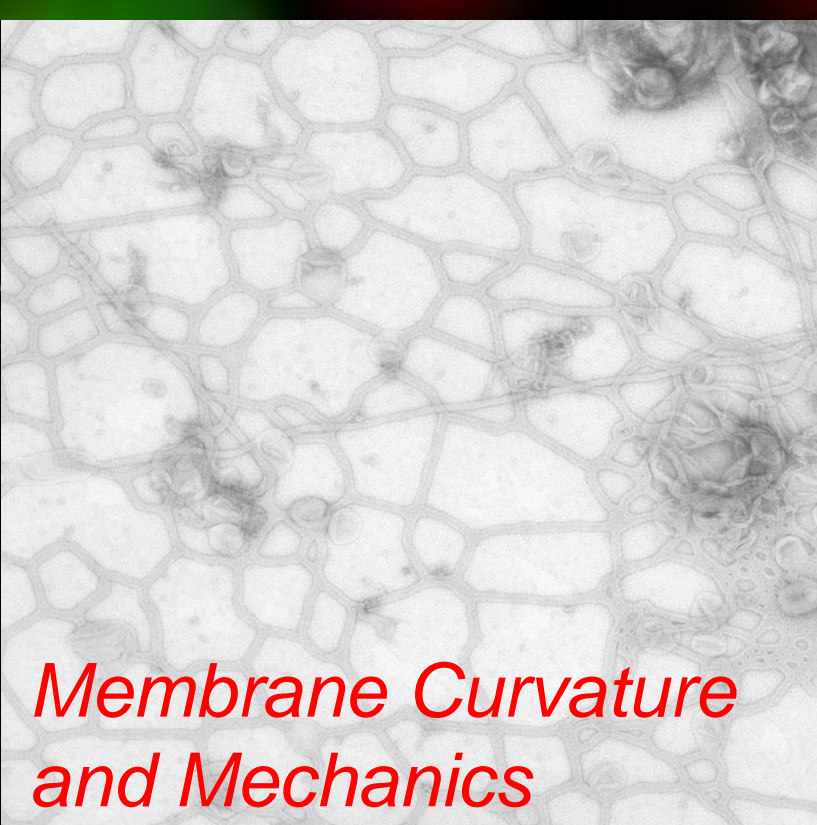
Teikyo Univ
Sachiko Tsukita



Hokkaido Univ.
Yusuke Ohba



We're organelle geeks



Kobe Univ.
Toshiki Itoh



Osaka Univ.
Tohru Ishitani

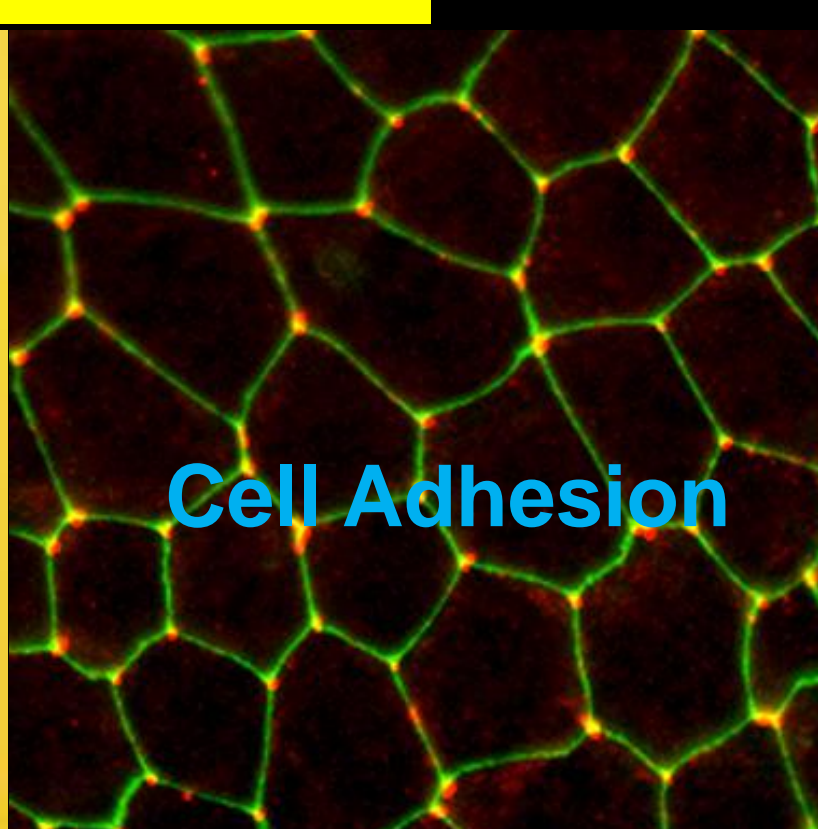
Cell adhesion and extracellular matrix



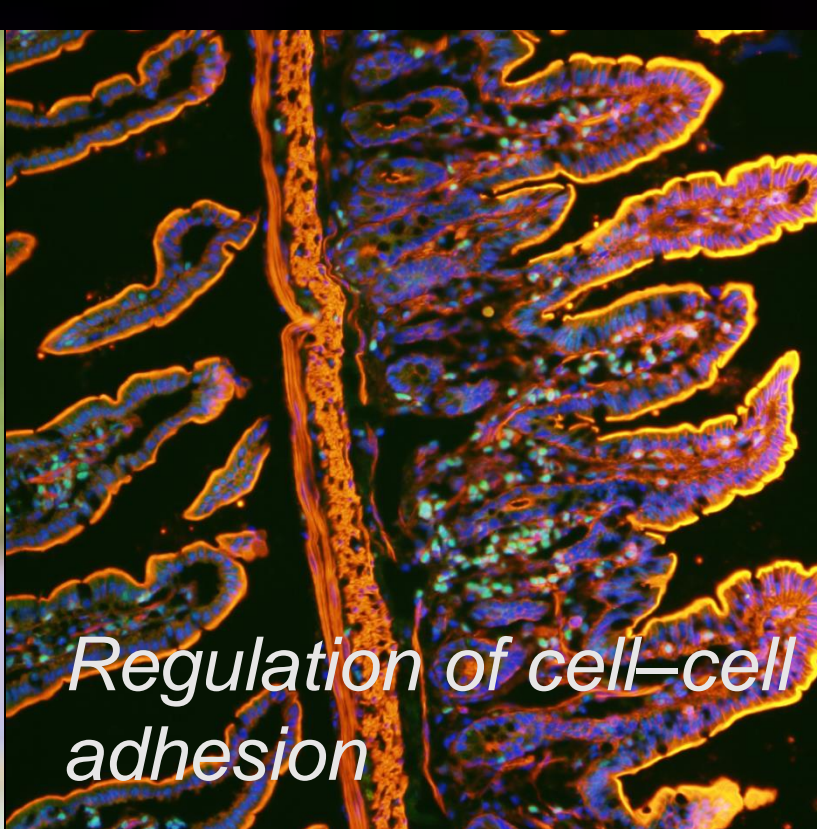
NIPS
Mikio Furuse



Tokushima Univ.
Shigenobu Yonemura



Kyusyu Univ.
Junichi Ikenouchi



Kyoto Univ.
Yukako Oda



Kyoto Univ.
Yasuyuki Fujita



Osaka Univ.
Eisuke Mekada

CSF welcomes submissions from around the globe.

No membership is required for submission.

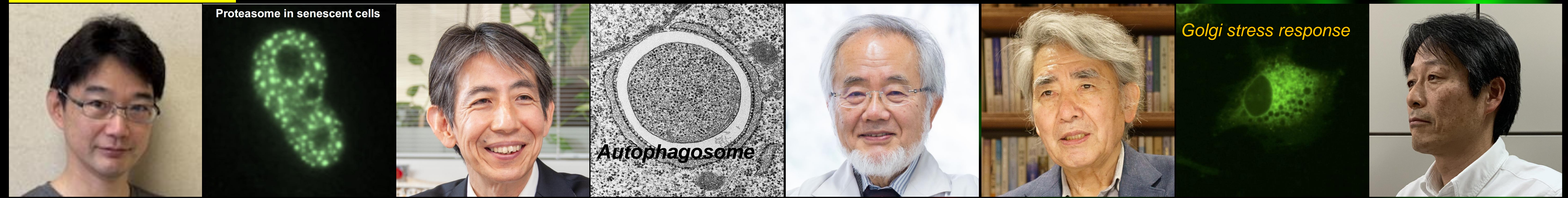
Manuscripts can initially be submitted 'format-free'.

Four types: Full articles, Reviews & Mini-reviews, Technical Notes, and Perspectives

Fast Review Process: **14 days from submission to first decision!**

APC: 100,000 JPY (approx. 667 USD)

Life of proteins



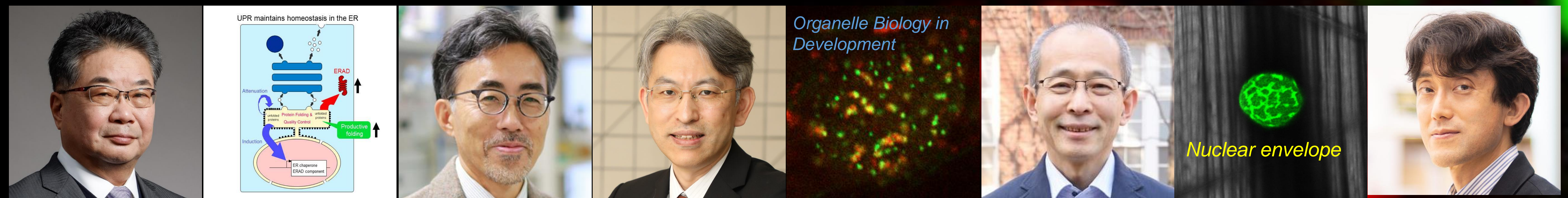
Univ. of Tokyo
Shigeo Murata

Univ. of Tokyo
Noboru Mizushima

Science Tokyo
Yoshinori
Ohsumi

JT Biohistory
Kazuhiro Nagata

Univ. of Hyogo
Hiderou Yoshida



Kyoto Univ.
Kazutoshi Mori

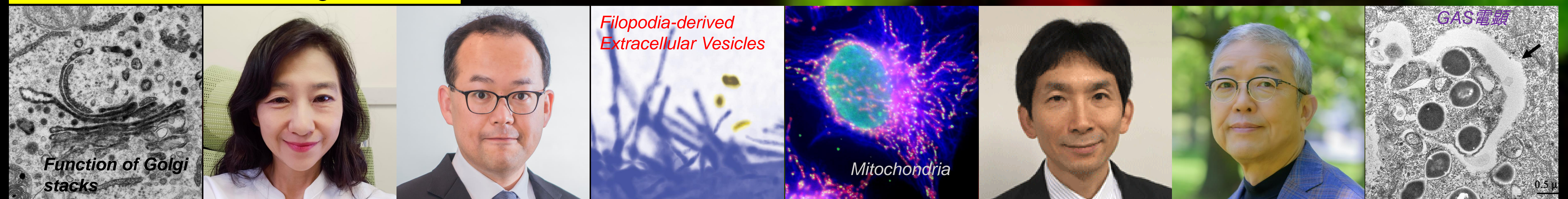
Kyoto Sangyo
Univ.
Toshiya Endo

Gunma Univ.
Ken Sato

Rikkyo Univ.
Satoshi Goto

Science Tokyo
Noriyuki Matsuda

Intracellular traffic and organelles

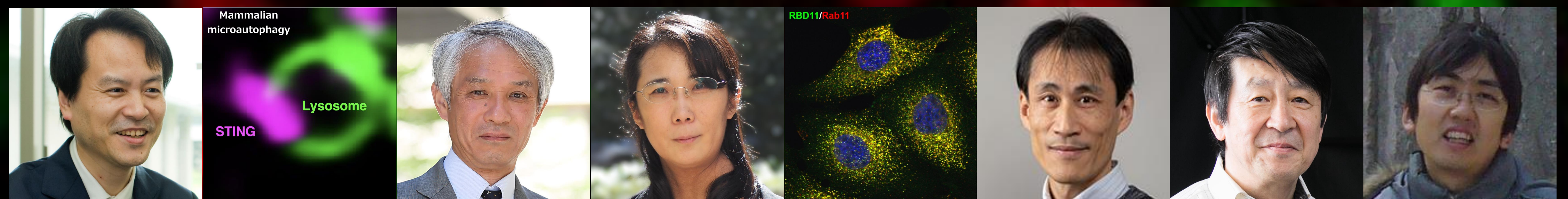


Hiroshima Univ.
Akiko Satoh

NAIST
Shiro Suetsugu

Univ. of Osaka
Naotada Ishihara

Univ. of Osaka
Tamotsu Yoshimori



Tohoku Univ.
Tomohiko Taguchi

Kyoto Univ.
Kazuhisa
Nakayama

Gunma Univ.
Miyuki Sato

Tohoku Univ.
Mitsunori
Fukuda

RIKEN
Akihiko
Nakano

Univ. of Osaka
Akihiro Harada

Chromosome, nucleus and gene expression



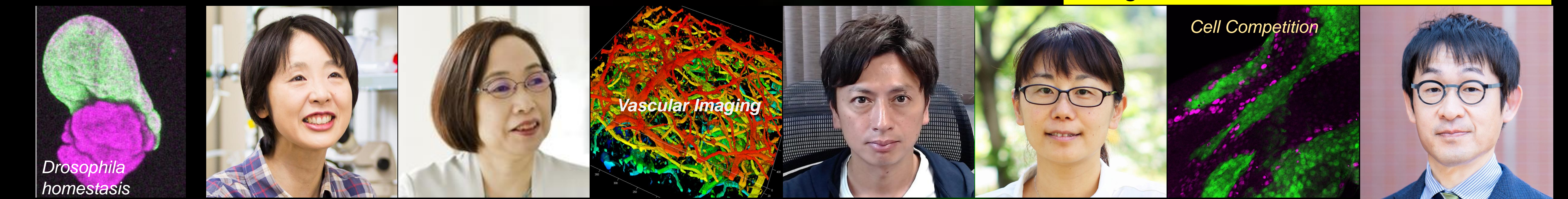
Univ. of Tokyo
Miho Ohsugi

NIG
Kazuhiro
Maeshima

RIKEN
Naoko Imamoto

NIBIO
Yoshihiro Yoneda

Cell growth, differentiation and death



Nagoya Univ.
Shizue Ohsawa

Tohoku Univ.
Asako Sugimoto

Fukui Univ.
Hiroyasu Kidoya

Tohoku Univ.
Erina Kuranaga

Kyoto Univ.
Tatsushi Igaki